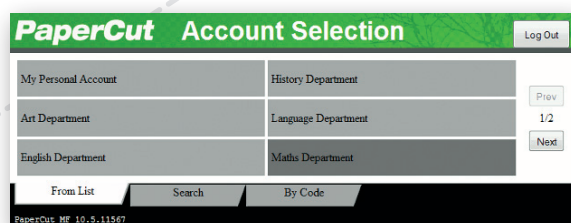


Complete control over print, copy, scan and fax

PaperCut MF is a simple, low cost software application that lets you take control and manage your printing, copier and MFD use.

PaperCut MF is a simple to install and use copier and print management application. Its features eliminate waste, encourage responsible behavior and make users and departments accountable for their usage. PaperCut MF includes embedded software that runs on your copier/MFD to enable tracking, control and secure print release directly from the device's panel.

PaperCut MF is easily configured and is suitable for sites of any size regardless of environment, platform or MFD/printer make and model. PaperCut's solutions are currently in use in over 30,000 sites worldwide and translated into 20 languages, making PaperCut MF a product you can both trust and easily afford.

Benefits of PaperCut

- **Control costs**
for every copy, print, scan and fax
- **Centrally manage**
MFDs/printers and users from a simple web interface
- **Report and Recover**
costs by user, department, project, cost center, device and function
- **Secure Access**
via login, ID number or access card
- **Enforce**
responsible use via rules, limits and popup notifications
- **Enable**
secure print release and *Find-Me* printing
- **Vendor Neutral**
supporting all major operating systems and devices



SUPPORTED PLATFORMS

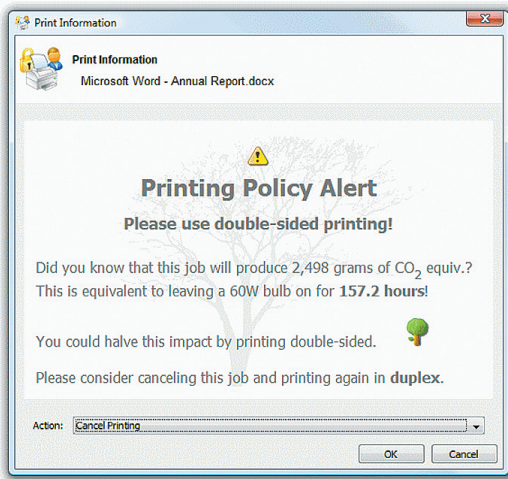
sales@papercut-mf.com
www.papercut-mf.com

Why PaperCut MF?

Intuitive and Easy to Use

PaperCut MF is regarded as the simplest system of its type to deploy and manage. System administrators have full access to administration and configuration via a familiar web interface. It offers:

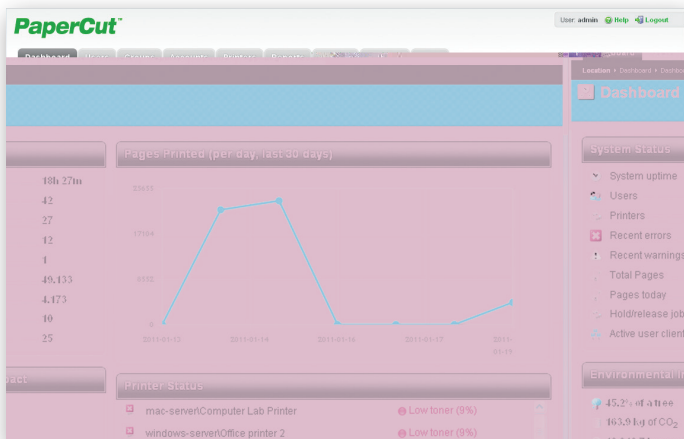
- User directory (eg. Active Directory and others) integration and automatic user account creation
- Secure print release and *Find-Me* printing
- Administrator dashboard with real-time status updates
- Web Print: Driverless printing for wireless devices
- Optional client and account billing
- Ability to encourage responsible use via popup notifications



Web Based Administration

PaperCut MF provides “out of the box” browser-based administration access from any network location enabling centralised management of every user and device. Web technologies make cross-platform support easy as there is no need for additional software to be installed and no web server configuration.

A key feature of the administration interface is the dashboard tab – an easy-to-read single page view of the printing environment for administrators. The Dashboard page utilises a number of gadgets to present key real time information such as system activity and status updates, along with trend information and statistics from past activity such as number of pages printed and environmental impact measures.

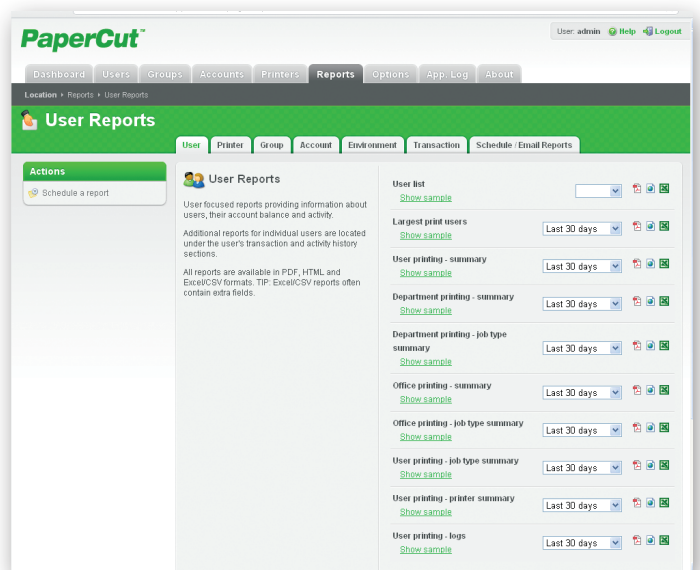


Detailed Reporting



PaperCut includes over 50 one-click reports available for online viewing, printing or export. Reports address all areas ranging from detailed page logs to summaries by user, department, device or environmental impact. Administrators can create ad-hoc reports by applying filter conditions and reports can be emailed to specified people on a regular schedule.

More information is at www.papercut.com/tour/report/



Powerful Job Scripting

Advanced scripting can be used to define and finely tune your printing policy, and support your organization in eliminating waste and changing user behavior.

With PaperCut you can:

- Automatically route large jobs to detected high volume printers
- Discourage printing of emails via popup print policy warnings
- Encourage double sided printing
- Discourage or disable color printing by user group
- Least cost routing (suggest more cost effective devices based on conditions)
- Allow free printing (e.g. during class times)
- Define action by job attribute, user / group, period of day, device feature / type.



See environmental impact at a glance with the Paper-Less Alliance widget

a n P i F

I
R
F

M D w t

F

h

"Find-Me" queue

Print
Server

Apply watermark to all pages

Text
Printed by %user% at %date%

Gray level
Medium ▾

Font size (points)
8 ▾

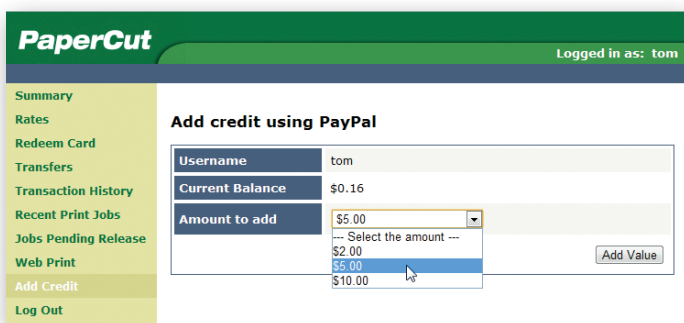
Position
Bottom of page ▾



PaperCut in Education

Payment Gateways

Give end users the ability to make payments into their PaperCut account using payment gateways. Payment gateways allow third party systems to connect to PaperCut in a supported manner. Common gateways include leading providers like PayPal and Authorize.Net which allow real-time online payments via credit card. PaperCut also supports closed or internal payment systems such as a main college funds account. Hardware gateways are available to support a range of cash loaders, self-service kiosks and bill and coin boxes. For hardware, please refer to a PaperCut MF Authorized Solution Center.

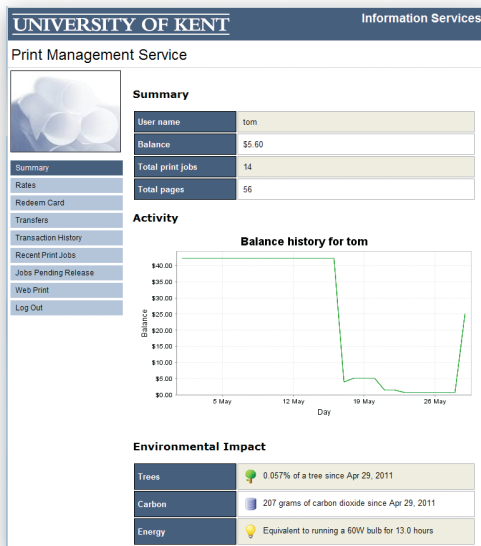


End users can easily manage their account balances and add credit via online and onsite methods



User Web Interface

End users have access to a set of web tools to track their own activity in real-time, query their account balances, and view their transactions – without the need for intervention from administrators. The end user interface is fully customizable, so you can design a look and feel to match your website or intranet pages.



Managing Quotas

Users can operate in either credit or debit, with defined account rules including how and how often an account is credited. Use network groups to define how additional quota/credit is assigned. Use network groups to define how additional quota/credit is assigned; for example, allow a specific group of users to accumulate their quota while others operate on a “use it or lose it” basis.

Pre-Paid/Top-Up Cards

PaperCut MF comes with a simple to implement voucher system for purchasing additional print credit. Administrators can print out a batch of single-use cards with a pre-defined value. Users redeem cards by entering the card's unique code on a web page.

Technical Specifications

Scalability:

- ☛ Suitable for networks of 5 to 500,000+ users

Architecture:

- ☛ Single server or multi-server environments
- ☛ Monitor locally attached printers
- ☛ Client software is optional
- ☛ Available in 20+ languages and currency formats world-wide

Licensing:

- ☛ Enterprise-wide license: unlimited printers, servers, and workstations
- ☛ Licensed based on number of end users, plus a per-device license for MFD's running embedded software
- ☛ Premium Upgrades Assurance included for first 12 months

Open Systems:

- ☛ Open documented database schema
 - ☛ XML Web Services API with sample code
- ### Supported Server Operating Systems:
- ☛ Microsoft Windows Server (any edition including 64-bit and server core)
 - ☛ Mac OS X Server (10.4 or higher)
 - ☛ Linux (any modern distribution)
 - ☛ Novell OES Linux and iPrint

Supported User Directory Services:

- ☛ Active Directory (native integration including nested groups and OU's)
- ☛ OpenDirectory
- ☛ eDirectory
- ☛ LDAP
- ☛ NIS, PAM, Samba, and others.

Supported Workstation Operating Systems:

- ☛ Microsoft Windows (any edition)
- ☛ Mac OS X (10.4 or higher)
- ☛ Linux (any modern distribution)
- ☛ Unix Workstation (Java required to run client software)

MFDs/Printers:

- ☛ Almost all major digital laser, inkjet and wide format devices supported
- ☛ Supported print languages: PCL, PCL6, HPGL, Postscript, PCL-GUI, Ricoh RPCS, Epson ESC, QPDL, various GDI printers and many languages that don't even have names

Supported Database Servers:

- ☛ Self managing internal database: suitable for up to 5,000 end users
- ☛ Microsoft SQL Server 2000/2005/2008 (either 32 or 64 bit)
- ☛ Microsoft SQL Express 2005/2008 (free from Microsoft)
- ☛ PostgreSQL 7.1 or higher
- ☛ MySQL 5.0 or higher
- ☛ Oracle 9.2 or higher

Supported Cluster Environments:

- ☛ Microsoft Failover Server
- ☛ Microsoft Cluster Server
- ☛ Veritas Cluster Server
- ☛ Linux HA

Encryption:

- ☛ SSL encryption used for sensitive client server communication.